



MetMax Europe
WE TAKE METAL TO THE MAX

**Precision,
high complexity,
technological
excellence**



How it's made

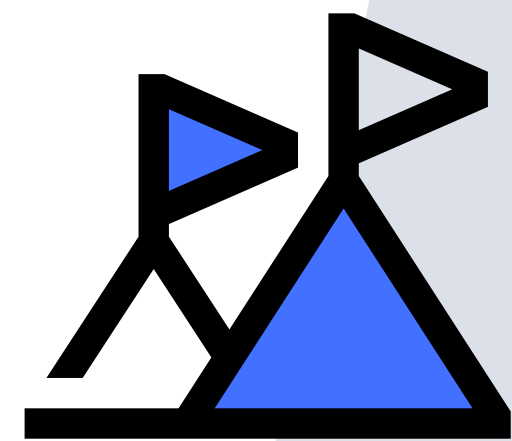
Specialized on medium and small lot sizes from yearly few hundred to more ten thousands pieces

4000 active articles

No matter if it's about robotic surgery, safety critical railway brake technology, elevators, water- sewage- or vacuum pumping, burning or separation technology, you can meet the materialisation of our craftsmanship across **various industries, all over the globe**

Introduction

MetMax Europe is a metalworking company with **decades of history and experience**. We manufacture and supply portfolios of complex components for our global TIER1, OEM clients and partners from various industries with a focus on **complex precision machining, heat and surface treatment and assembly**.



OUR FOOTPRINT

MetMax Europe Production Plant in Győr
MetMax Europe Switzerland AG in Zürich*

*foundation in progress

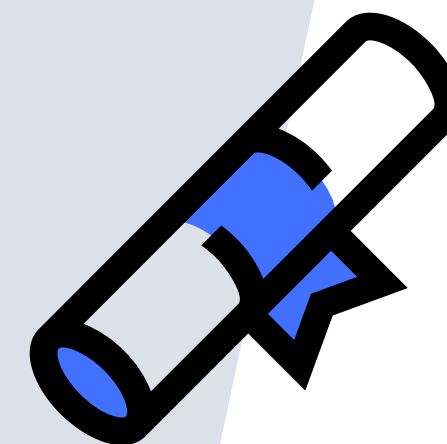
ISO 9001

ISO 14001

ISO 45001 is under preparation

ESG - Advanced level*

* Based on audit of Budapest Stock Exchange

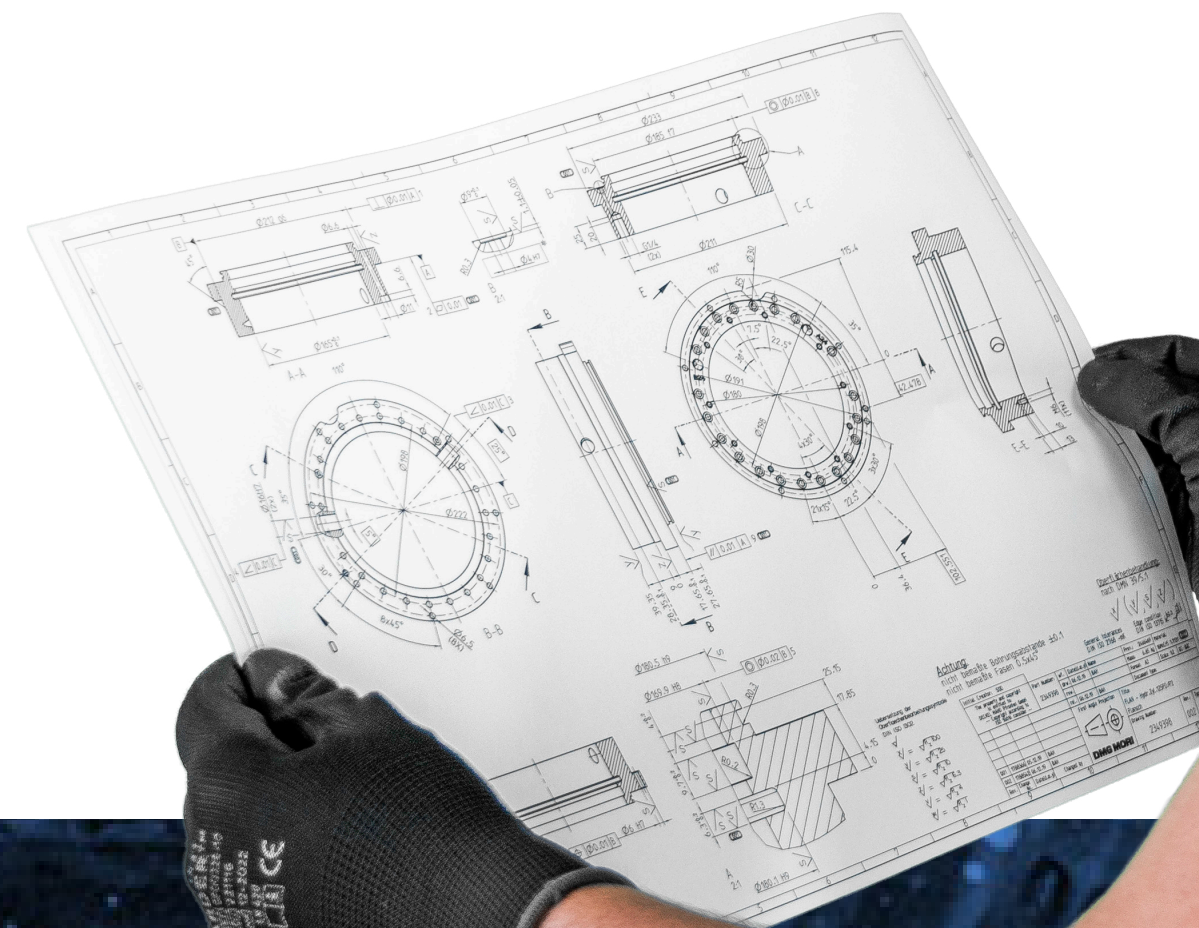


MetMax Europe
WE TAKE METAL TO THE MAX

Digital machining partner

We combine **the latest technologies with our craftsmanship** to provide **tailor made solutions** and unique customer experience.

Enhanced digital solutions overwhelm our complete manufacturing process, from CAD design to creating digital twins that simulate production on both an office and shop floor level, including quality control.



MetMax Europe
WE TAKE METAL TO THE MAX

State of the art quality and process control

We ensure maximum quality and efficiency of all times without compromising safety or performance standards.

- **All our machines are network connected** and equipped with barcode scanning capabilities, enabling centralized management of machining and measurement programs and production feedback.
- A full control of processes can be maintained throughout both live data streams or digital ones.



MetMax Europe
WE TAKE METAL TO THE MAX

TURNING

Various complex, rotationally symmetrical parts are machined on our 40+ turning machines, including complex, robotised counter spindle machines with up to 3 cylinder heads (48 tools) and milling capabilities. Blum system ensures robust and accurate machining by in-process measurement capability.

GRINDING

MetMax Europe's different grinding technologies are designed to achieve the last microns of accuracy. From flat to cylindrical (even B axis), centerless and parallel grinding, we are equipped to perform the extra microns, even through active measure-controlled processes.

Our technologies

MILLING

Up to 1200mm, we offer 3 to 5 axis complex milling solutions on 30+ machines. Multi pallet 4 axis machines (up to 6 pallets) are ideal combination of productivity and versatility, even for complex portfolios of high mix low volume product families.

INDUCTION HARDENING, ANNEALING, MATERIAL TESTING

Complex machining is supported by in-house case hardening and annealing facilities to ensure maximum flexibility. Stable technology and quality is supported by own material laboratory and hardness testing facility.



MetMax Europe
WE TAKE METAL TO THE MAX

Our machines

54 CNC LATHES
Horizontal ▪ Vertical ▪ CNC turning-milling center
Single spindle ▪ Twin spindles ▪ Counter spindles

11 CONVENTIONAL MACHINES
Lathe ▪ Milling ▪ Grinding

33 CNC MILLING CENTERS
5 axis ▪ 4 axis 2 pallets ▪ 4 axis 6 pallets
3 axis 2 pallets ▪ 3 axis

9 CNC GRINDING MACHINES
Diameter ▪ Flat ▪ Parallel ▪ Slot

2 EDM WIRE CUTTING MACHINES

2 INDUCTION HARDENING

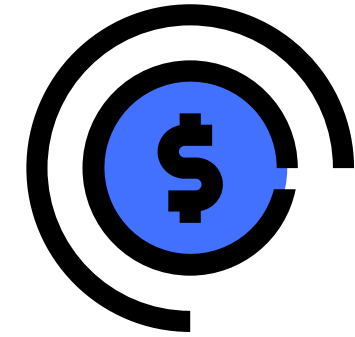
5 STRESS RELIEVING FURNACES

11 OTHERS



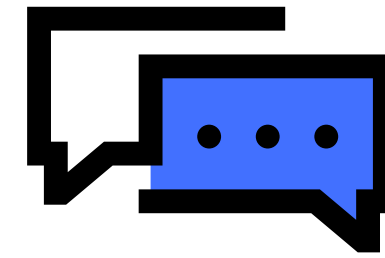
MetMax Europe
WE TAKE METAL TO THE MAX

Experienced partner in technology and services



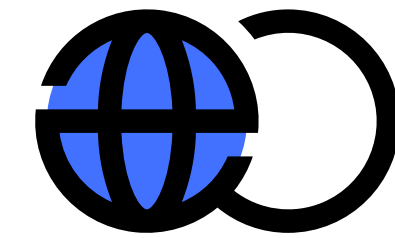
VA/VE* , NPI AND PROTOTYPING**

We co-operate and leverage our experience in our partner's research & development, design and cost optimisation processes for the mutual benefit of customer and supplier



PROBLEM SOLVING AND COMMUNICATION

We are engaged to solve problems via technical knowledge and proper communication



LOGISTIC MODELS

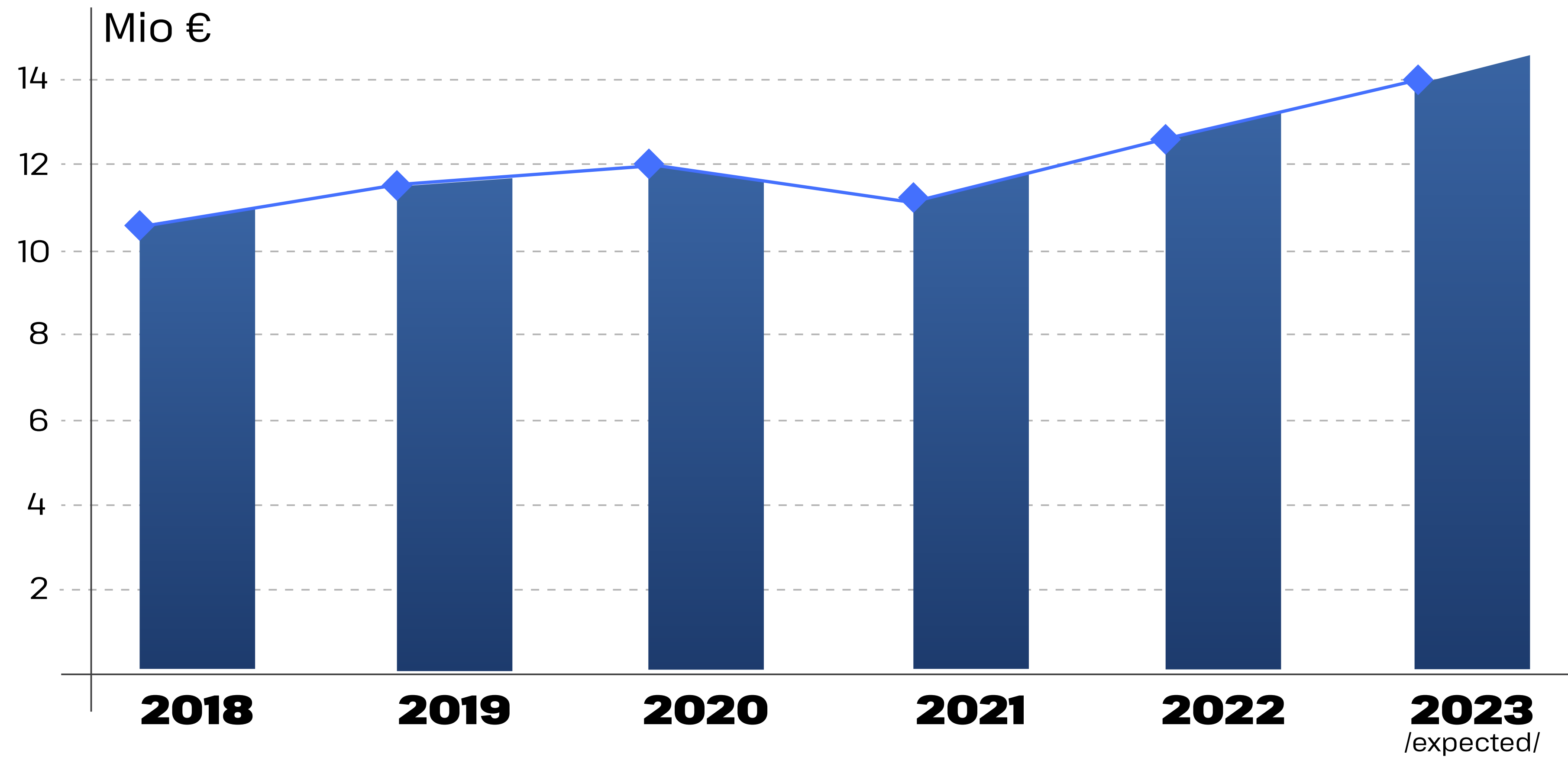
We support various type of models based on operating model of our customers: SMI, schedule agreement, stock hotel

*Value Analyse/Value Engineering
**New Product Introduction



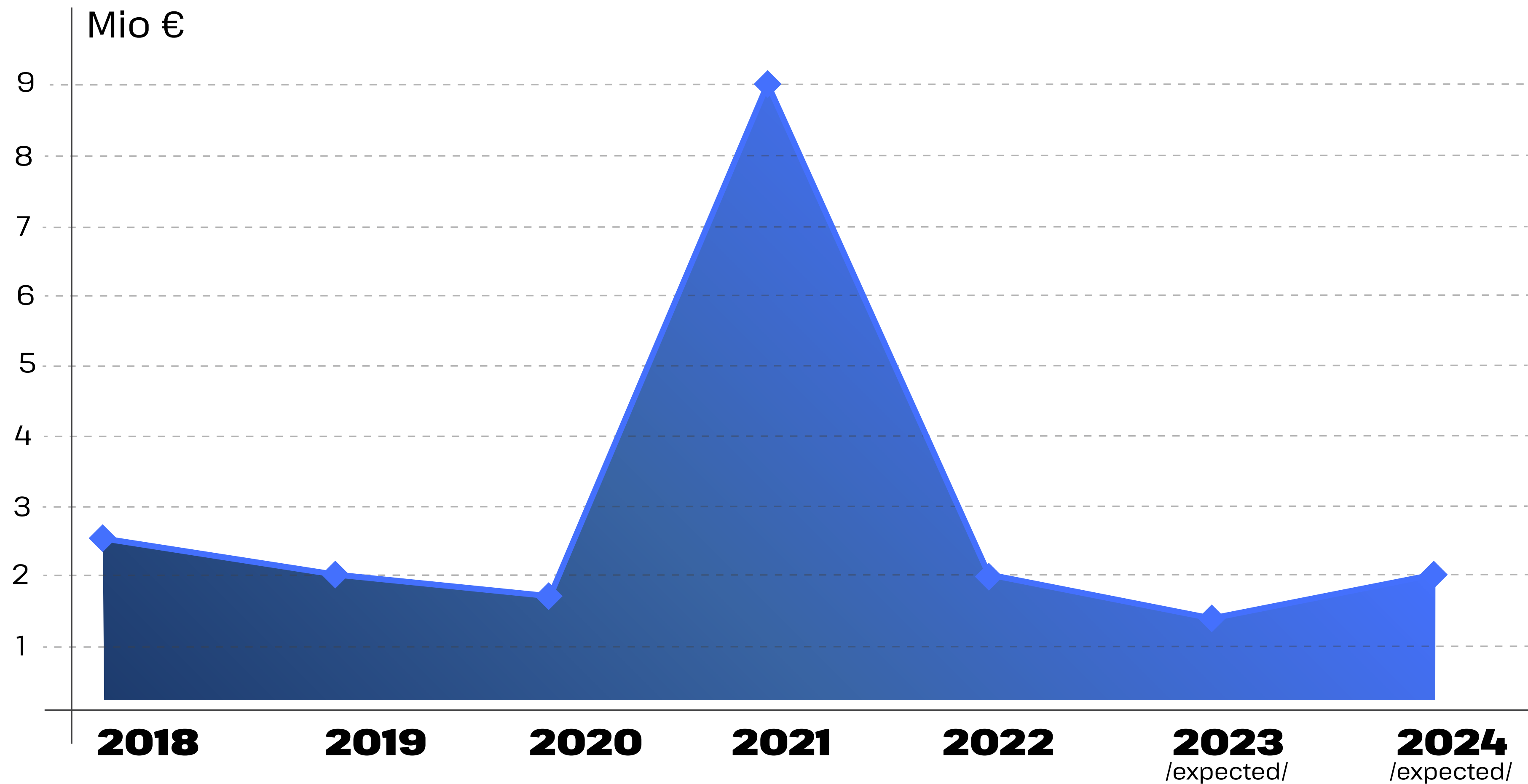
MetMax Europe
WE TAKE METAL TO THE MAX

Sales revenue



MetMax Europe
WE TAKE METAL TO THE MAX

Investment in capacity enhancement

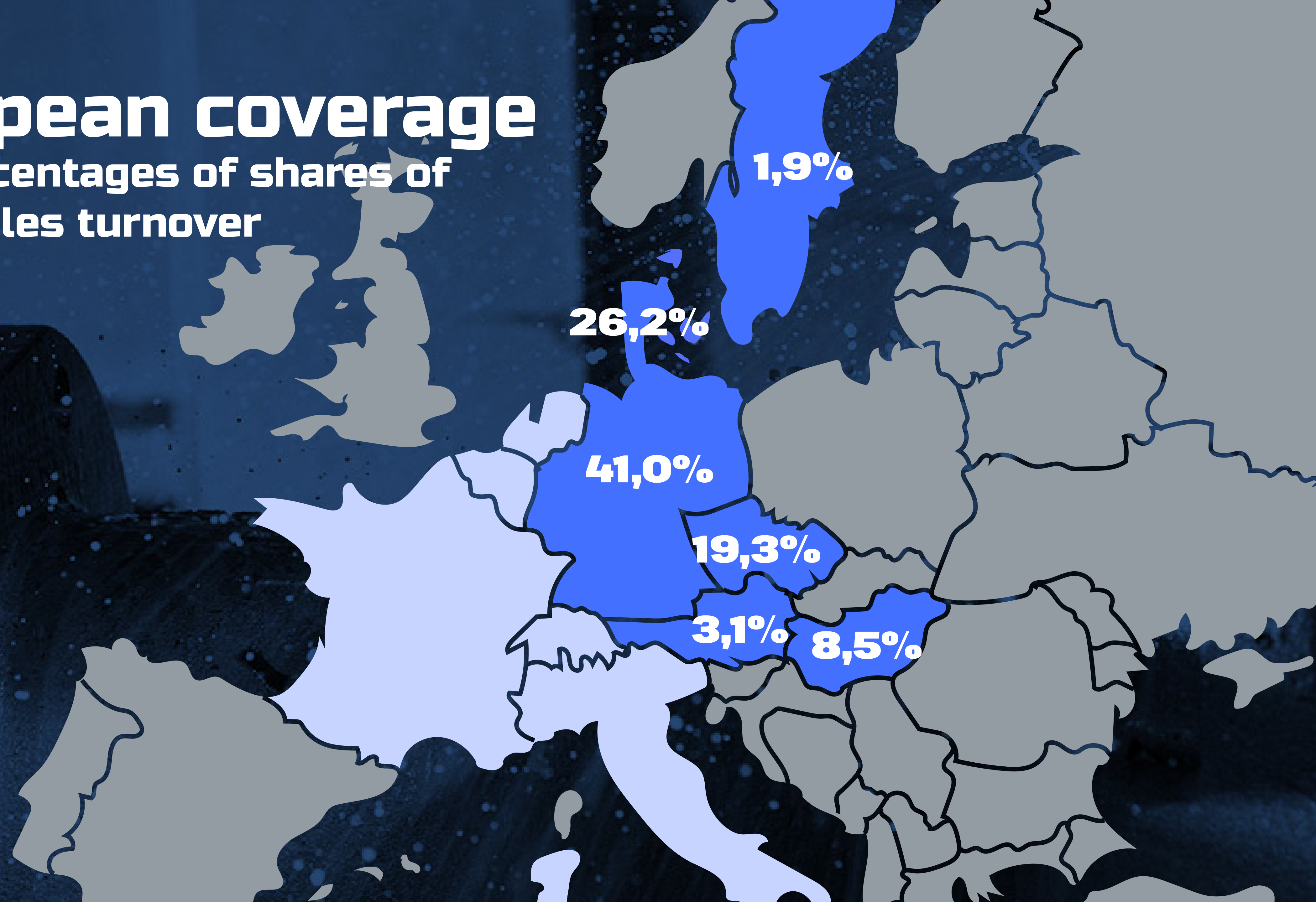


MetMax Europe
WE TAKE METAL TO THE MAX

European coverage

with percentages of shares of
yearly sales turnover

● New targeted
markets



References



Grundfos Holding A/S



Knorr-Bremse AG



Edwards s.r.o
(Atlas Copco Group)



Leybold GmbH
(Atlas Copco Group)



DECKEL MAHO Pfronten GmbH



Alfa Laval Technologies AB



AB Thonab



Payer Industries Hungary Kft.



MetMax Europe
WE TAKE METAL TO THE MAX





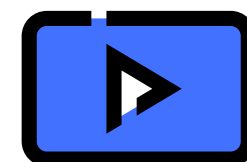
MetMax Europe

WE TAKE METAL TO THE MAX

Let's create a strategic partnership together!



www.metmaxeurope.hu



MetMax Europe Zrt. - YouTube

METMAX EUROPE ZRT.

Production Plant

9086 Töltéstava, Lévy Henrik utca 1.

Telefon: **+36 (30) 1757098**

E-mail: **info@metmax.hu**

METMAX EUROPE SWITZERLAND AG

Sales Office

General-Wille-Strasse 10, CH 8002 Zürich